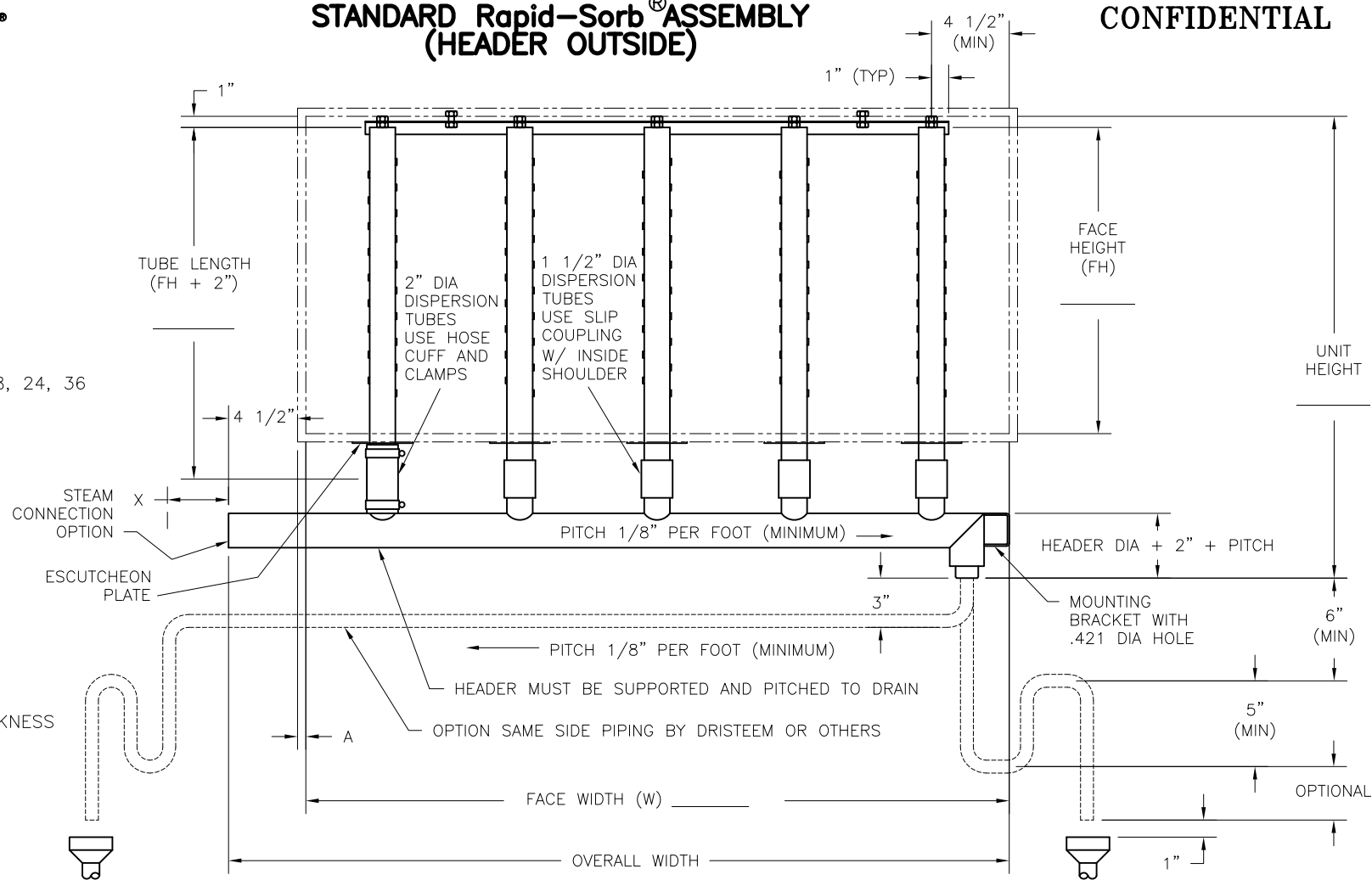


STANDARD Rapid-Sorb® ASSEMBLY (HEADER OUTSIDE)

ORDER NO _____
 TAG _____
 CAPACITY #/HR _____
 ABSORPTION DISTANCE _____
 ENTERING RH _____
 LEAVING RH _____
 TUBE SPACING: 4, 6, 9, 12, 18, 24, 36
 TUBE QUANTITY _____
 (SEE OM-607)
 TUBE DIA _____
 TUBE INSULATION: Yes No
 HEADER DIA _____
 STEAM CONNECTION (SEE OM-607) _____
 EXTENDED INLET (X) _____
 SAME SIDE PIPING _____
 A = WALL OR INSULATION THICKNESS
 VERTICAL AIRFLOW _____



TUBE CAPACITY (LBS/HR)		TUBE DIA	MIN. HEADER DIA	HEADER CAPACITY (LBS/HR)
INSULATED	NONINSULATED			
43	40	1 1/2"	2"	UP TO 250
80	77	2"	3"	251-500
			4"	501-800
			5"	801-1300
			6"	1301-2100

1. TUBE SPACING DETERMINED BY ABSORPTION DISTANCE AND ENTERING AND LEAVING % R.H. (SEE CATALOG FOR ABSORPTION DISTANCE CHART).
2. TUBE CAPACITY EQUALS TOTAL CAPACITY DIVIDED BY TUBE QTY.(SEE OM-607).
3. TUBE AND HEADER DIAMETER DETERMINED BY TUBE CAPACITY.
4. MINIMUM HEADER DIA CAPACITY MUST MEET OR EXCEED TOTAL CAPACITY REQUIREMENTS.
5. FACE HEIGHTS OF LESS THAN 22" MAY HAVE REDUCED TUBE CAPACITIES. CONTACT DRI-STEEM

HEADER LENGTH = A+W+3 _____
 UNIT WIDTH = HEADER LENGTH + 1-1/2" _____
 UNIT HEIGHT = FH + 5" + HEADER DIA + PITCH _____

INSTALLER TO PROVIDE 6" DROP PRIOR TO 5" X 3/4" NPT WATER SEAL, THEN RUN TO OPEN DRAIN

H	10-26-11	EC# 5554
G	11-3-09	EC# 4960
F	11-14-08	EC# 4757
REV	DATE	RECORD
DATE: 1-8-92	DWG: OM-609	