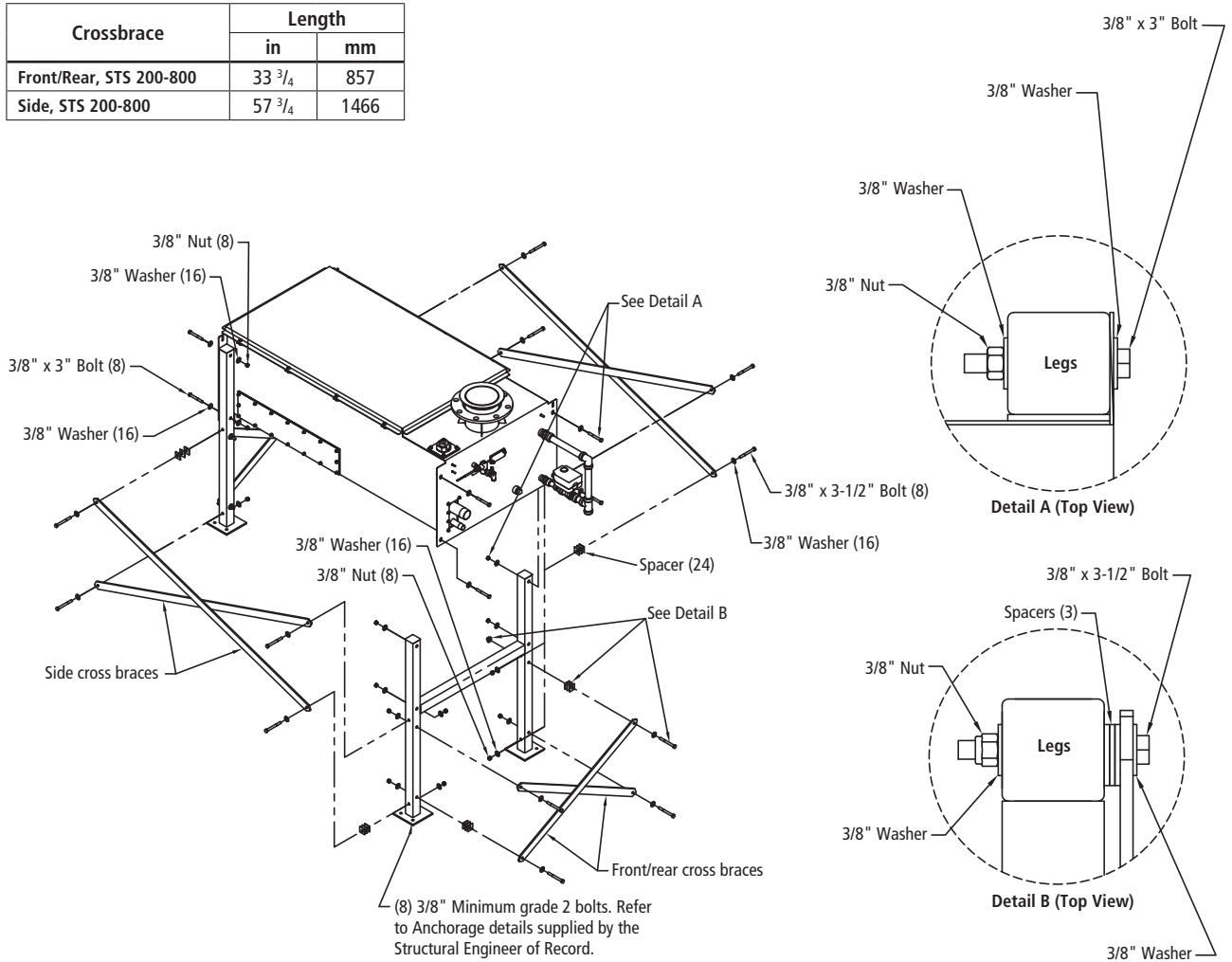


# Seismic STS 200-800 Floor Mount

**Figure 1-1:**  
**STS-200 through STS-800 floor mount seismic certification option installation**

Crossbrace	Length	
	in	mm
Front/Rear, STS 200-800	33 3/4	857
Side, STS 200-800	57 3/4	1466



**Notes:**

1. The height from floor to bottom of tank is 23 7/8 in (606 mm).
2. All hardware shown supplied by DRI-STEEM.

DM-11912